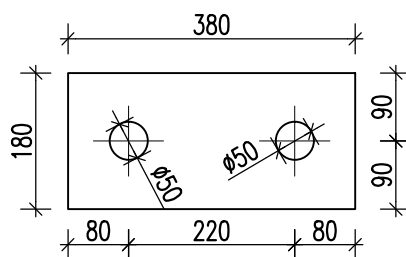


revize	popis změny	datum	kontroloval
investor:	<p style="text-align: right;"> <b>Intelek Invest a.s.</b>  <b>Vlárská 22</b>  <b>Brno 627 00</b> </p>		
klient:	<p style="text-align: right;"> <b>GOLDBECK</b>  <b>Prefabeton s.r.o.</b> </p>		
projekt:	<p style="text-align: center;"> <b>VÝROBNÍ, OBCHODNÍ, VÝVOJOVÉ</b>  <b>A ŠKOLÍCÍ CENTRUM</b>  <b>SPOLEČNOSTI INTELEK, BRNO-1.ETAPA</b>          STAVEBNÍ OBJEKT S002a SKLADOVÁ A VÝROBNÍ HALA       </p>		
<p> <b>D1.2 STAVEBNĚ KONSTRUKČNÍ ČÁST</b>  <b>PREFABRIKOVANÉ KONSTRUKCE</b>  <b>DÍLENSKÁ DOKUMENTACE</b> </p>			
projektant:	<p> <b>KCE statika a dynamika staveb s.r.o.</b>          Zodpovědný projektant: Ing. Vít Hušek          Na Zápraží 403          460 07 LIBEREC 3          Česká Republika          Tel.: +420 48 73 56 017          fax: +420 48 73 56 171          E-mail: husek@kce-statika.cz          Archivní číslo projektu A-15-07       </p>		
			
příloha:	<p><b>MONTÁŽNÍ MATERIÁL</b></p>		
stupeň:	DPS/DD	jednotky: mm	paré:
datum:	2.3.2015	měřítko: 1:10	
vypracoval:	ing.B.Kulštejn	kontroloval:	ing.V.Hušek
č. výkresu:	<p><b>K-09a</b></p>		rev:

M01

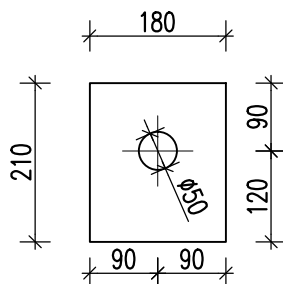
LOŽISKO 380/180-10  
PRYŽ 14MPa  
EPDM 10mm



72 ks

M02

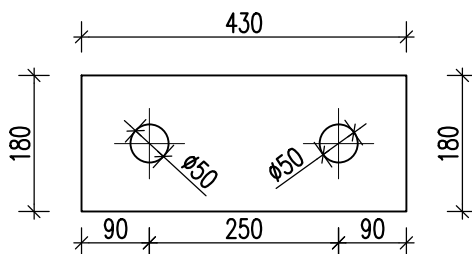
LOŽISKO 210/180-10  
PRYŽ 14MPa  
EPDM 10mm



4 ks

M03

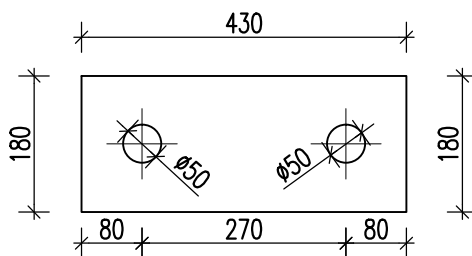
LOŽISKO 430/180-10  
PRYŽ 14MPa  
EPDM 10mm



4 ks

M04

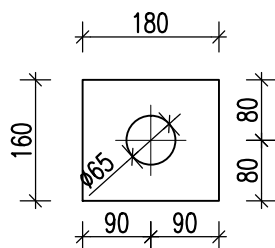
LOŽISKO 430/180-10  
PRYŽ 14MPa  
EPDM 10mm



2 ks

M05

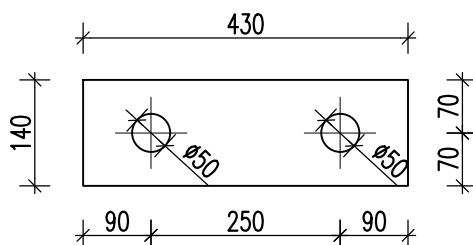
LOŽISKO 180/160-10  
PRYŽ 20MPa  
EPDM 10mm



12 ks

M06

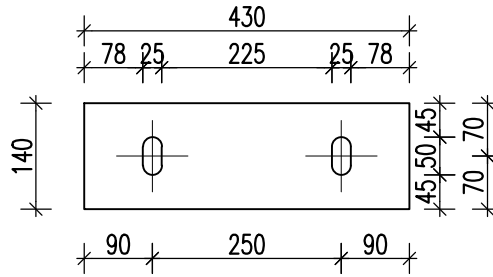
LOŽISKO 430/140-10  
PRYŽ 14MPa  
EPDM 10mm



8 ks

### M07

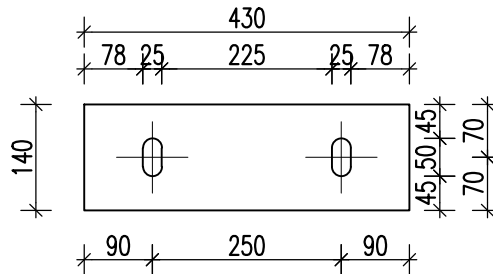
P2-430/140  
BEZ POVRCHOVÉ ÚPRAVY  
OCEL S235 – NEREZ



20 ks

### M08

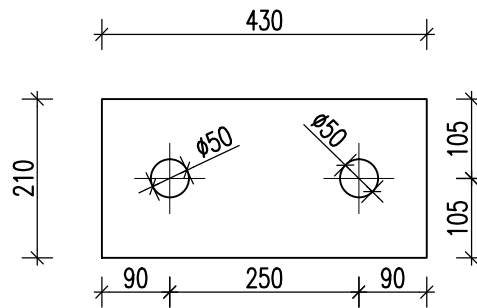
PTFE 2mm-430x140  
TEFLON+OLEJ(WD-40)



8 ks

### M09

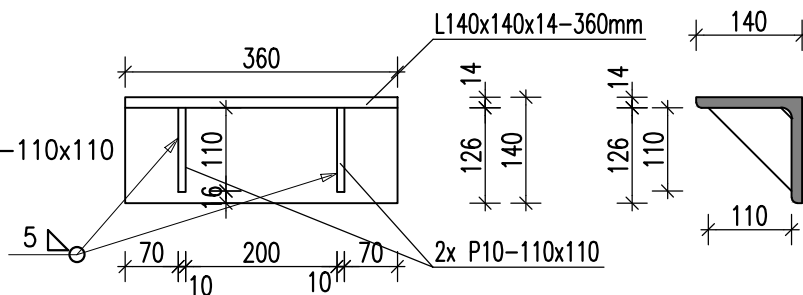
LOŽISKO 430/210-10  
PRYŽ 14MPa  
EPDM 10mm



22 ks

### M10

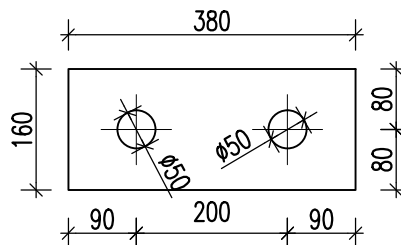
OCELOVÁ KONZOLA  
L140x140x14-360 + 2xP10-110x110  
S235JRG2  
2x ZÁKLADNÍ NÁTĚŘ



9 ks

### M11

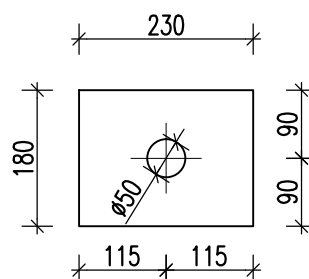
LOŽISKO 380/160-10  
PRYŽ 14MPa  
EPDM 10mm



20 ks

### M12

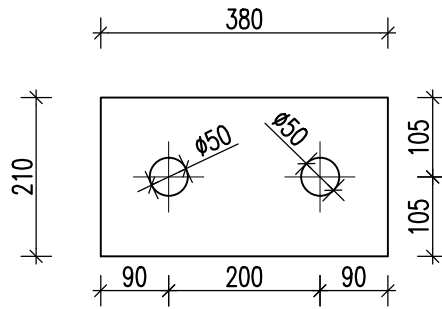
LOŽISKO 230/180-10  
PRYŽ 14MPa  
EPDM 10mm



4 ks

### M13

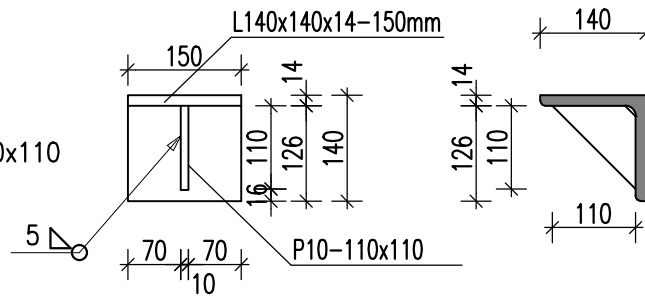
LOŽISKO 380/210-10  
PRYŽ 14MPa  
EPDM 10mm



2 ks

### M14

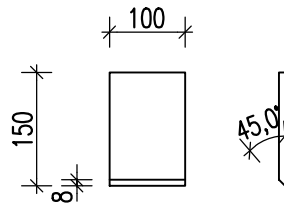
OCELOVÁ KONZOLA  
L140x140x14-150 + P10-110x110  
S235JRG2  
2x ZÁKLADNÍ NÁTĚŘ



5 ks

### M15

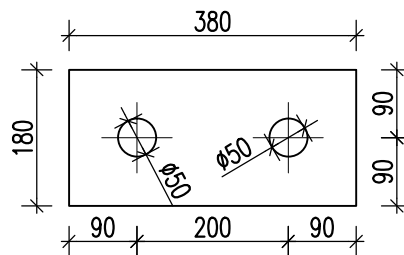
P8-150/100  
BEZ POVRCHOVÉ ÚPRAVY  
OCEL S235



86 ks

### M16

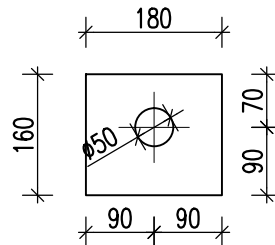
LOŽISKO 380/180-10  
PRYŽ 14MPa  
EPDM 10mm



4 ks

### M17

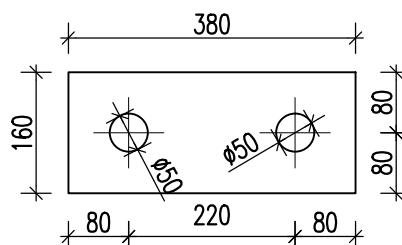
LOŽISKO 180/160-10  
PRYŽ 14MPa  
EPDM 10mm



4 ks

### M18

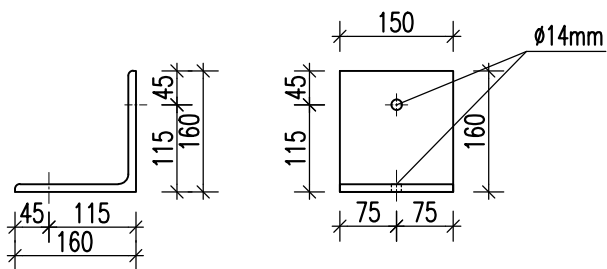
LOŽISKO 380/160-10  
PRYŽ 14MPa  
EPDM 10mm



6 ks

**M19**

L160/160/10-150  
2x ZÁKLADNÍ NÁTĚŘ  
OCEL S235



4 ks

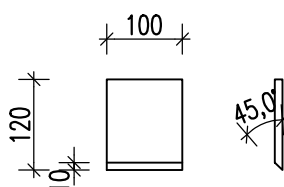
**M20**

ŠROUB S MATKOU HS38/17 - GV M16/50  
POZINK 8.8

8 ks

**M21**

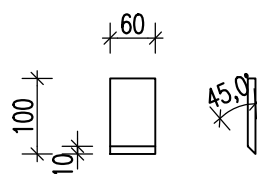
P10-120x100  
BEZ POVRCHOVÉ ÚPRAVY  
OCEL S235



X ks

**M22**

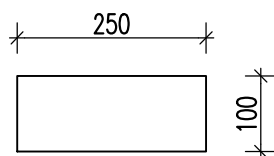
P10-100x60  
BEZ POVRCHOVÉ ÚPRAVY  
OCEL S235



X ks

**M23**

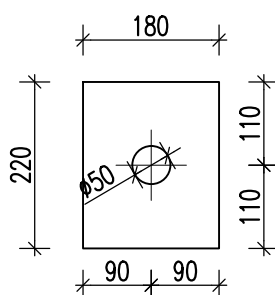
P8-250x100  
BEZ POVRCHOVÉ ÚPRAVY  
OCEL S235



4 ks

**M24**

LOŽISKO 220/180-10  
PRYŽ 14MPa  
EPDM 10mm



1 ks

M25

PRUT ØR16-400mm

+ CHEM.KOTVA HILTI HIT HY200

2 ks

---