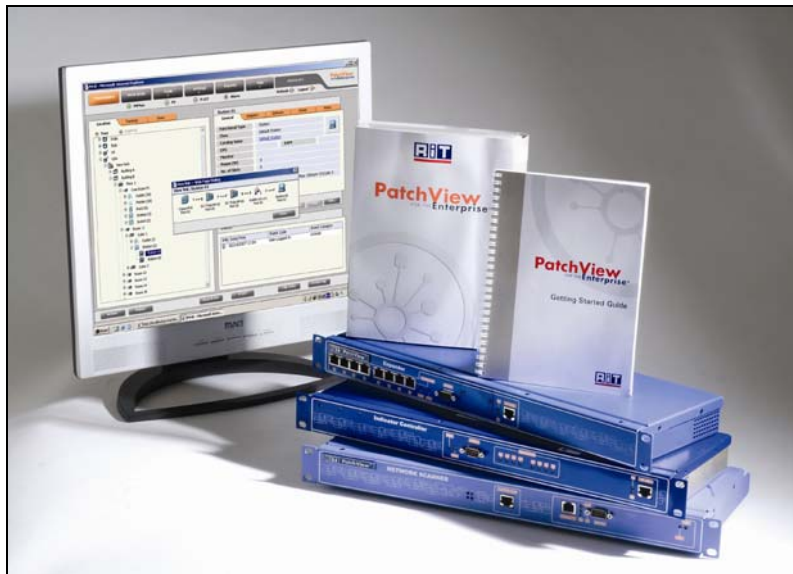


## PatchView for the Enterprise (PV4E) 5.0

### *Features*

---



The foundation of RiT's PatchView System is **PV4E or PV4E Premium**. Once you have purchased one of these packages you can purchase any additional module as described below. This allows you to build your own unique product mix according to your individual needs and requirements.

**PV4E** is a field-proven, comprehensive solution for real-time location-based control over infrastructure and networked devices. PV4E as a basic product contains the following features:

- **P-LET**

Pro-active LAN Equipment Topology - a network tracking system that automatically discovers end-to-end network connectivity and gathers vital network topology information without breaching the organization's security policies.

- **Work Order**

Created by the system manager and used to assign and track different tasks issued to the customer's technicians. These tasks can vary from creating and editing links to installing software and relocating terminal equipment, for example, telephones, printers etc.

## PatchView for the Enterprise (PV4E) 5.0

### *Features*

---

- **Secure Link**

Allows you to define vital links in the organization. Closely monitors information on any change or problem that occurs on the secure link or on its end devices (station and switch port).

- **Device Locator**

Detects the precise physical location of devices on the network, as well as detecting an unauthorized device in the network. Using the Device Locator, you can pinpoint the precise location of this device.

- **PV or PVMMax support**

With the collaboration with PV or PVMMax Hardware, the application provides real-time accurate management of the RiT SMART Cabling System.

- **Generic Switch Driver**

Automatically detects key information about existing and new switches in the network.

**PV4E Premium** is a new package offered by RiT that contains all of the above-mentioned PV4E features and the following selected modules:

- PBX Module
- Provisioning Module
- Device Authorization Module
- Cable Test Results Module
- SDK Runtime

## PatchView for the Enterprise (PV4E) 5.0

### *Features*

---

The following modules can be purchased in addition to PV4E. An alternative option is to purchase the PV4E Premium package that contains all of the following modules:

- **PBX Module**

Takes the information acquired from the PBX ports and maps the end-to-end connectivity between the PBX switch port and the telephone end device.

- **Provisioning Module**

Enables a user to assign system resources and privileges in a fully automated environment. Significantly improves the planning and provisioning process, including automated Moves Adds & Changes (MAC), for datacenter and workspace environments.

- **Cable Test Results Module**

Contains data for link and channel electrical cable tests for each port. Includes an option to view these results using a PDF/FLW viewer.

- **SDK Runtime**

Enables customers to extend PV4E's capabilities throughout their organization by integrating it with 3rd party or legacy applications.

- **Device Authorization Module**

Provides support of MAC Address Authorized User List, creates Event when unauthorized device is detected, supports different security levels per location and provides easy authorization of a new device.

## **PatchView for the Enterprise (PV4E) 5.0**

### ***Description***

---

PV4E Management Software takes the guesswork and legwork out of managing the physical layer of your network. PV4E is a field-proven, comprehensive solution for automated, real-time, location-based control over connectivity and networked devices. The software drastically speeds up and simplifies daily provisioning, maintenance and security tasks. It also provides the Infrastructure and IT manager with full control of network assets as well as a complete integration layer that provides an open bi-directional interface to any network/operations management system.

PV4E's automatic capabilities also guarantee the ability to detect changes or faults in the network in real-time and alert the user accordingly.

## PatchView for the Enterprise (PV4E) 5.0

### *Specifications*

#### Deployment Server

Group	Component	Minimum Requirement
Hardware	Pentium IV	Running at 2.4GHz or greater (for large installations, the computer configuration should be determined separately)
	RAM	2GB recommended
	Hard Disk space	2 GB
Software	Operating System	Windows 2003 Server with SP1, Windows 2000 Server containing SP4
	Microsoft Internet Explorer	6.0 SP 1 IE 7
	DB	MS SQL 2000 Standard/Enterprise + SP4 or MS SQL 2005 with SP1
	IIS 5 or 6	Prerequisites: FTP Server, SMTP Services
	MSMQ	Version 2.0 or 3.0 or higher

#### Client

Group	Component	Minimum Requirements
Hardware	Pentium III 500MHz	Running at 500MHz
	RAM	512MB
Software	Operating System	Microsoft Windows 2000 or Windows XP SP2
	Internet Explorer	6.0 SP1 or IE 7 with ActiveX, Cookie and Java Script support