



MyPower S4100F Series Gigabit Aggregation Routing Switch

Datasheet

Maipu Communication Technology Co., Ltd
No. 16, Jiuxing Avenue
Hi-tech Park
Chengdu, Sichuan Province
People's Republic of China - 610041
Tel: (86) 28-85148850, 85148041
Fax: (86) 28-85148948
URL: [http:// www.maipu.com](http://www.maipu.com)
Email: overseas@maipu.com

All rights reserved. Printed in the People's Republic of China.

No part of this document may be reproduced, transmitted, transcribed, stored in a retrieval system, or translated into any language or computer language, in any form or by any means, electronic, mechanical, magnetic, optical, chemical, manual or otherwise without the prior written consent of Maipu Communication Technology Co., Ltd.

Maipu makes no representations or warranties with respect to this document contents and specifically disclaims any implied warranties of merchantability or fitness for any specific purpose. Further, Maipu reserves the right to revise this document and to make changes from time to time in its content without being obligated to notify any person of such revisions or changes.

Maipu values and appreciates comments you may have concerning our products or this document. Please address comments to:

Maipu Communication Technology Co., Ltd
No. 16, Jiuxing Avenue
Hi-tech Park
Chengdu, Sichuan Province
People's Republic of China - 610041
Tel: (86) 28-85148850, 85148041
Fax: (86) 28-85148948
URL: [http:// www.maipu.com](http://www.maipu.com)
Email: overseas@maipu.com

All other products or services mentioned herein may be registered trademarks, trademarks, or service marks of their respective manufacturers, companies, or organizations.

Maipu Feedback Form

Your opinion helps us improve the quality of our product documentation and offer better services. Please fax your comments and suggestions to (86) 28-85148948, 85148139 or email to overseas@maipu.com.

Document Title	MYPOWER S4100 SERIES GIGABIT AGGREGATION ROUTING SWITCH DATASHEET												
Product Version		Document Revision Number	1.0										
Evaluate this document	Presentation: (Introductions, procedures, illustrations, completeness, arrangement, appearance) <input type="checkbox"/> Good <input type="checkbox"/> Fair <input type="checkbox"/> Average <input type="checkbox"/> Poor												
	Accessibility: (Contents, index, headings, numbering) <input type="checkbox"/> Good <input type="checkbox"/> Fair <input type="checkbox"/> Average <input type="checkbox"/> Poor												
	Editorial: (Language, vocabulary, readability, clarity, technical accuracy, content) <input type="checkbox"/> Good <input type="checkbox"/> Fair <input type="checkbox"/> Average <input type="checkbox"/> Poor												
Your suggestions to improve the document	Please check suggestions to improve this document: <table style="width: 100%; border: none;"> <tr> <td><input type="checkbox"/> Improve introduction</td> <td><input type="checkbox"/> Make more concise</td> </tr> <tr> <td><input type="checkbox"/> Improve Contents</td> <td><input type="checkbox"/> Add more step-by-step procedures/tutorials</td> </tr> <tr> <td><input type="checkbox"/> Improve arrangement</td> <td><input type="checkbox"/> Add more technical information</td> </tr> <tr> <td><input type="checkbox"/> Include images</td> <td><input type="checkbox"/> Make it less technical</td> </tr> <tr> <td><input type="checkbox"/> Add more detail</td> <td><input type="checkbox"/> Improve index</td> </tr> </table>			<input type="checkbox"/> Improve introduction	<input type="checkbox"/> Make more concise	<input type="checkbox"/> Improve Contents	<input type="checkbox"/> Add more step-by-step procedures/tutorials	<input type="checkbox"/> Improve arrangement	<input type="checkbox"/> Add more technical information	<input type="checkbox"/> Include images	<input type="checkbox"/> Make it less technical	<input type="checkbox"/> Add more detail	<input type="checkbox"/> Improve index
<input type="checkbox"/> Improve introduction	<input type="checkbox"/> Make more concise												
<input type="checkbox"/> Improve Contents	<input type="checkbox"/> Add more step-by-step procedures/tutorials												
<input type="checkbox"/> Improve arrangement	<input type="checkbox"/> Add more technical information												
<input type="checkbox"/> Include images	<input type="checkbox"/> Make it less technical												
<input type="checkbox"/> Add more detail	<input type="checkbox"/> Improve index												
If you wish to be contacted, complete the following:													
Name		Company											
Postcode		Address											
Telephone		Email											

Contents

S4100F Switch	5
Key Features	7
Product Features	8
Technical Specifications	10
Order Information	12

S4100F Switch

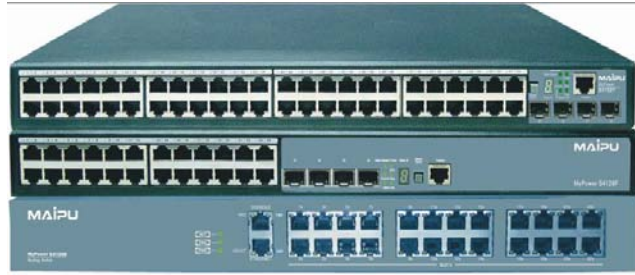
MyPower S4100F series Gigabit convergence routing switch is a new multi-service and high-performance desktop L2/L3 Ethernet switch developed by Maipu. It is applied in enterprise network aggregation, district access of IP MAN and high-quality access and provides stable, reliable and secure high-performance L2/L3 switching services for NGN.

It includes MyPower S4128F, MyPower S4152F, MyPower S4128F-POE, MyPower S4152F-POE models.

- MyPower S4152F provides 48 1000M electric interfaces, four 1000M Combo SFP interfaces, two 10G extended slots;
- MyPower S4128F provides 24 1000M electric interfaces, four 1000M Combo SFP interfaces, two 10G extended slots;
- MyPower S4152F-POE provides 48 1000M electric interfaces, four 1000M Combo SFP interfaces, two 10G extended slots and POE Supports;
- MyPower S4128F-POE provides 24 1000M electric interfaces, four 1000M Combo SFP interfaces, two 10G extended slots and POE Supports.

MyPower S4100 series Gigabit aggregation routing switch can forward Ethernet data frames with full wire speed at the second layer, which is similar to common Ethernet switches. It can realize L3 wire speed forwarding of IP packets, and has perfect security control, QoS and multicast capability. It can perform the L4-L7 ACL filtering on packets according to user definitions and combine with 802.1x authentication protocol to meet the security requirements of users.

With powerful QoS and multicast functions, it can meet the requirements of the enterprise network video and audio data with high priorities and other specified data for routing switches. It can adapt well to the typical applications that current enterprise networks need to use VLAN to separate broadcast domains and each VLAN needs to forward data with high speed. It can aggregate the data and transmit it to the core network. It can provide low-cost, high-performance, strong-expansibility and simple-management solutions for enterprise network centers, IP MAN, and district network aggregation.



MyPower 4100F series Gigabit aggregation routing switch

Key Features

- Supports L2/L3 line rate switching
- Powerful ACL access control capability. It can perform filtering control on L2-L7 data flow
- Supports RIP, OSPF, BGP
- Completely supports IPv4/IPv6 L2 and L3 protocols
- Has various security and authentication mechanisms
- Supports VRRP/VBRP routing redundancy protocols
- Supports 4094 802.1Q VLANs, QinQ
- Supports virtual IP-Stacking
- Supports 802.1X security authentication
- POE Supports
- IPv4&IPv6

Product Features

- **Supports L2/L3 protocols**

S4100F series switch provides 802.1d/w/s spanning tree protocol; 802.1q, 802.1p, 802.3ad, 802.3x, GVRP, DHCP, and SNTP protocols; IGMP, DVMRP, and PIM multicast protocols; RIPv1/2, OSPF, BGP, and VRRP routing protocols. It is suitable for complicated network environments, and supports IPv6 protocols and functions and IPv6 hardware forwarding.

- **Flexible VLAN separation function**

It supports 4K 802.1Q VLANs, SuperVlan, and GVRP dynamic VLAN protocol to make that different services and users cannot access each other, ensure the confidentiality of service data, improve the security of the whole network system, and save the network bandwidth.

- **Perfect security policy**

It provides various security policies such as user authority/identity authentication, port security, port rate limitation, port monitoring, address filtering, loopback check, and 802.1X authentication; provides various protect mechanisms for user access and network security. It has perfect security function design and supports user-based SNMP V3, MAC+IP+VLAN binding and 802.1X authentication security policies, and anti network storm attack, anti DOS/DDOS attack, anti ARP attack, and anti network protocol packet attack security technologies. In this way, the attacks and virus can be prevented and it is more suitable for large-scale, multi-service and complicated-traffic networks.

- **Powerful access control capability**

It supports L2-L7 ACL access control. It can classify data flow according to source destination MAC address, source destination IP address, UDP/TCP port number, and IP protocol type, set access control rules according to data classification, that is, set permit or deny, and then apply the rules to VLANs or physical ports.

- **Rich QoS mechanisms**

It provides up to 8 QoS queues, and supports QoS modes such as DSCP/TOS/802.1P, and priority queue scheduling arithmetic such as SP, SRR, WRR, and mixed scheduling. It can realize QoS functions such as port rate limitation and traffic shaping and meet the requirements of customer network for data processing priorities.

- **Comprehensive network management**

It provides SHELL, TELNET, WEB, SNMP, cluster management, third-party software to realize across-platform and large-scale network management

and friendly man-machine interface, and provide powerful support for users to manage devices and control network status.

- **10G extending**

MyPower S4100F supports 2 extending Slots to provide up-to 4-ports 10G interfaces for users.

Technical Specifications

Product Features	MyPower S4152F	MyPower S4152F-POE	MyPower S4128F	MyPower S4128F-POE
Product Configuration				
Device Structure	Desktop			
Physical port	48 10/100/1000M electric interfaces, four 1000M combo SFP interfaces, two 10G extended slots	48 10/100/1000M electric interfaces, four 1000M combo SFP interfaces, two 10G extended slots, POE Supports	24 10/100/1000M electric interfaces, four 1000M combo SFP interfaces, two 10G extended slots	24 10/100/1000M electric interfaces, four 1000M combo SFP interfaces, two 10G extended slots, POE Supports
Console port	One			
Outband Ethernet port	One			
Switching capability	176Gbps	176Gbps	128Gbps	128Gbps
POE	/	Yes	/	Yes
VLAN	4K			
Power-off auto recovery	Yes			
Grounding	Yes			
Anti-static	Yes			
Lightning strike	Yes			
Average no-fault time	80,000 hours			
Standards and protocols				
L2 protocol	802.1X, VLAN, PVLAN, STP, RSTP, MSTP, port mirroring, IGMP Snooping, GVRP, broadcast storm control, AAA, port binding, address filtering, IP-based filtering, MAC-based ACL, MAC+IP-based ACL, and super-long Jumbo Frame, IP-Stacking			
L3 protocol	Static route, RIPv1/v2, OSPF, BGP4, IGMP, PIM-SM, PIM-DM, MBGP, VRRP,MCE(for V3 Version)			
Upper layer application	HTTP, TELNET, FTP/TFTP,DHCP/DHCP Relay, SNMP V1/V2/V3, RMON 1/2/3/9, SNTP			

Security mechanism	SSH, ACL flow filtering mechanism, ACL, SNMPv3, Radius, user grading login authentication, access table host access control, data log, IP address/VLAN ID/MAC address/port combining binding, packet filtering, packet filtering of packets at application layer			
IPv6	IPv6 ND, IPv6 PMTU, IPv6 FIB, IPv6 ACL			
Network management interface	SHELL, WEB, TELNET, network management software, MIB, Sflow, VCT, UDLD			
QoS	Diff-serv/QoS, traffic monitoring CAR, SP, WRR, SP+WRR queue scheduling arithmetic 802.1P/DSCP/TOS			
IEEE	IEEE 802.3 (10BASE-T) IEEE 802.3u (100BASE-T) IEEE 802.3z (1000BASE-X) IEEE 802.3ab (1000BASE-T) IEEE 802.3ae (10G BASE) IEEE 802.1x (port authentication) IEEE 802.3ad (Link Aggregation) IEEE 802.3x (Flow Control) IEEE 802.1d (STP) IEEE 802.1Q (Virtual LAN) IEEE 802.1w (RSTP) IEEE 802.1s (MSTP) IEEE 802.1p (Cos priority) IEEE 802.3af (POE)			
Physical index				
Dimension (W×D×H)	440mm×415mm×44mm			
Power supply				
Input voltage (AC)	100~240V, 50~60Hz			
Input voltage(DC)	RPS(12V), DC(-48V)			
Power consumption (MAX)	110W	180W	110W	180W
POE Power consumption	/	370W	/	500W
Environment				
Temperature	0~45°C			
Humidity	10~90%, non-condensing			

Order Information

Series	Model	Description
MyPower S4128F		
MyPower S4128F Series	Basic Version	
	MyPower S4128F-AC	V2 Version:10G IPv6 routing switch, 24 10/100/1000M electric interfaces, four 1000M Combo SFP interfaces, 2x10G extended slots(up-to 4 10G interfaces), AC+RPS Power supply
	MyPower S4128F-POE-AC	V2 Version:10G IPv6 routing switch, 24 10/100/1000M electric interfaces, four 1000M Combo SFP interfaces, 2x10G extended slots(up-to 4 10G sinterfaces) ,AC+DC Power supply, POE Support
	Advanced Version	
	MyPower S4128F	V3 Version:10G IPv6 routing switch, 24 10/100/1000M electric interfaces, four 1000M Combo SFP interfaces, 2x10G extended slots(up-to 4 10G interfaces), AC Power supply
MyPower S4128F-POE	V3 Version:10G IPv6 routing switch, 24 10/100/1000M electric interfaces, four 1000M Combo SFP interfaces, 2x10G extended slots(up-to 4 10G interfaces),AC+DC Power supply, POE Support	
MyPower S4152F		
MyPower S4152F Series	Basic Version	
	MyPower S4152F-AC	V2 Version:10G IPv6 routing switch, 48 10/100/1000M electric interfaces, four 1000M Combo SFP interfaces, 2x10G extended slots(up-to 4 10G interfaces), AC+RPS Power supply
	MyPower S4152F-POE-AC	V2 Version:10G IPv6 routing switch, 48 10/100/1000M electric interfaces, four 1000M Combo SFP interfaces, 2x10G extended slots(up-to 4 10G interfaces), AC+DC Power supply, POE Support
	Advanced Version	
	MyPower S4152F	V3 Version:10G IPv6 routing switch, 48 10/100/1000M electric interfaces, four 1000M Combo SFP interfaces, 2x10G extended slots(up-to 4 10G interfaces), AC+DC Power supply
MyPower S4152F-POE	V3 Version:10G IPv6 routing switch, 48 10/100/1000M electric interfaces, four 1000M Combo SFP interfaces, 2x10G extended slots(up-to 4 10G interfaces), AC+DC Power supply, POE Support	
POE Power Supply and XFP 10G Card		
POE Power Supply	PCR01-48/20	V3 Version, External POE Power Supply, 500W Consumption, 444mmx43.8mmx220mm(WxHxD), Input AC 90~265V, Output DC -49~51V
2-Port XFP Card	SM41F-2XFP	2-Port 10GE Card (for all the new models)
2-Port SFP Card	SM41F-2GEF	2-Port 1G SFP Card (for all the new models)

