

# ORiNOCO 11a/b/g Wireless Client Card Quick Installation Guide for Microsoft Vista

## Pre-Installation Checklist

- Laptop running Windows Vista.
- Laptop needs to have proper PCMCIA slot.

## Installation and Initial Configuration

### 1. Verify package contents before you install

Each ORiNOCO shipment includes:

- One ORiNOCO 802.11a/b/g ComboCard (Gold or Silver)
- One ORiNOCO Installation CD-ROM containing software and documentation

### 2. Insert CD\_ROM: Initial Configuration

- The Install Program for the ORiNOCO 11a/b/g PCMCIA Card screen appears.
- Run **Setup.exe** from the CD if the installer does not launch automatically.
- Do not insert the card into your laptop until Step 7 is complete.

### 3. Click Next to begin on the Welcome dialog box

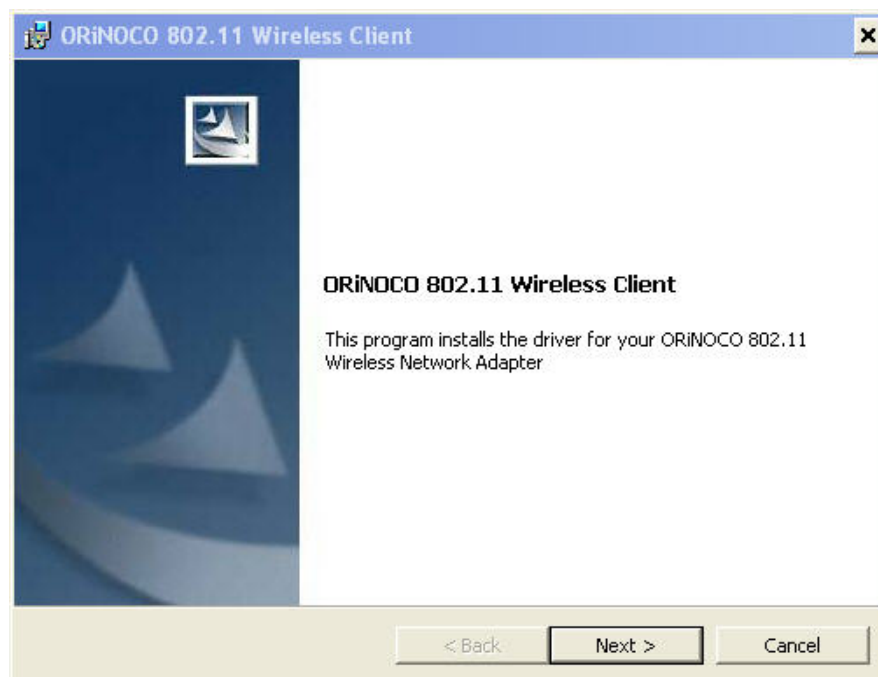


Figure 1: Setup "Welcome" dialog Box

#### 4. Read and accept the license agreement

The license agreement screen appears now. By default, the text "I do not accept the terms in the license agreement" is selected.

- Select "I accept the terms in the license agreement" option in the screen.



Figure 2: License agreement

#### 5. Select a destination folder and a program folder

- This is the location where the program files will be installed.
- If you wish to install the program files in a different folder, click **Change** and select the appropriate folder.
- Click **Next** to continue.

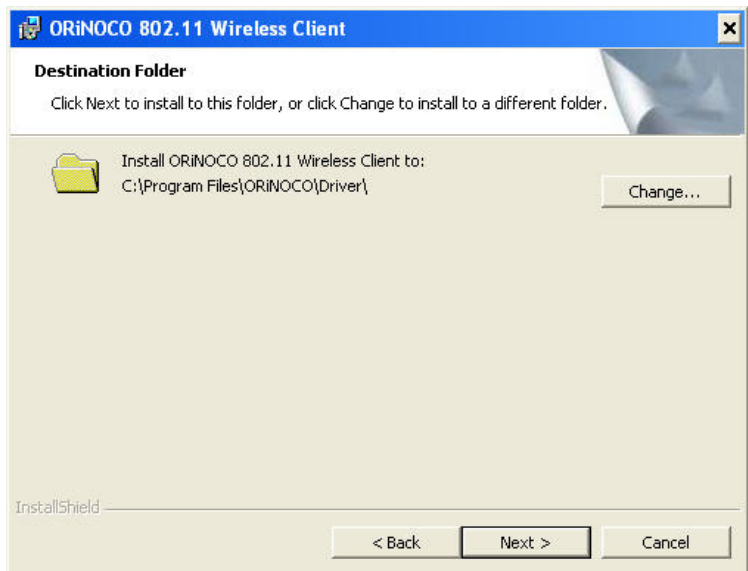


Figure 3: Choose Destination Folder for the Installation Program

**6. Click Install to begin the installation process**

The installation begins. The status bar displays the installation progress.

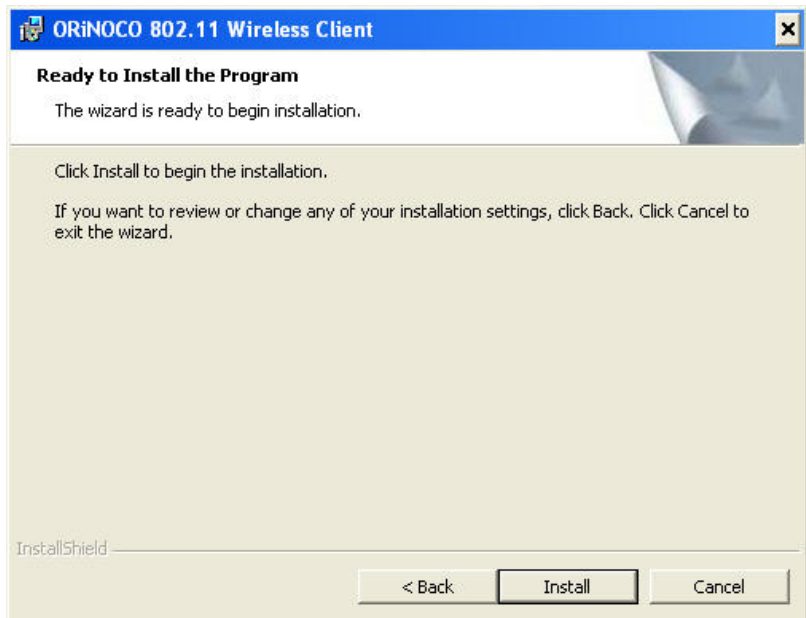
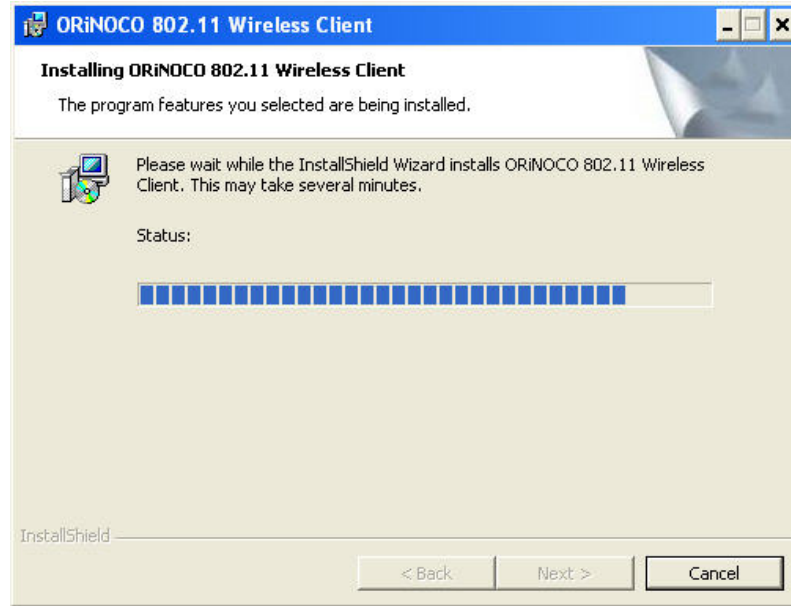


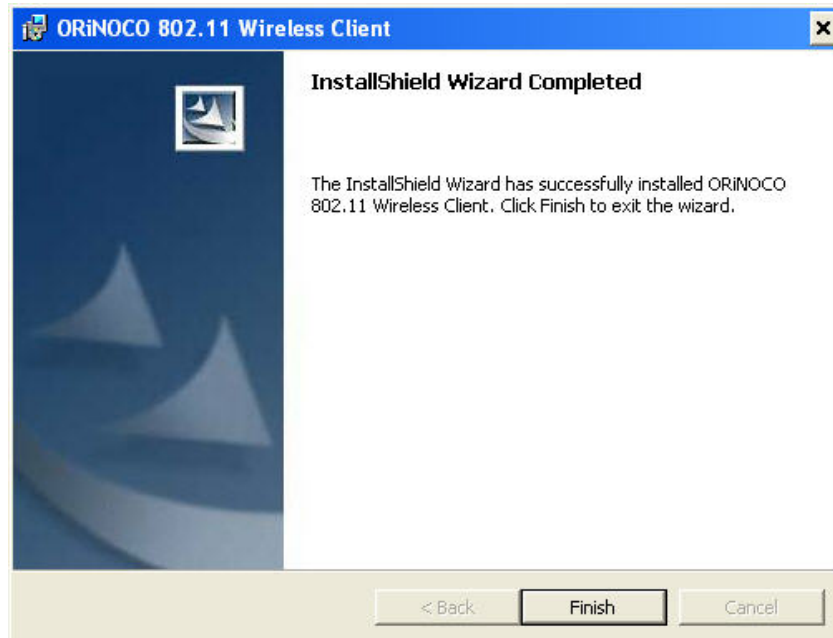
Figure 4: Install Setup dialog box



**Figure 5: Installation process in progress**

**7. Click Finish when the installation is complete**

The InstallShield Wizard has finished installing the ORiNOCO 802.11a/b/g ComboCard (Gold or Silver) software on your Laptop.



**Figure 6: Installation completed**

## 8. Insert the ComboCard into the Laptop

If prompted, follow any on-screen instructions to complete the installation.

**NOTE:** For wireless network connectivity configuration, refer to [www.microsoft.com](http://www.microsoft.com).