

SFP Fiber Modules

The 065-77SM is a high performance and cost-effective module for serial optical data communication applications specified for single-mode of 1.25 Gbps. It operates with + 3.3V power supply. The module is intended for single-mode fiber, operates at a nominal wavelength of 1,310 nm and complies with Multi-source Agreement (MSA) Small Form Factor Pluggable (SFP).

Each module consists of a transmitter optical subassembly, a receiver optical subassembly and an electrical subassembly. All of them are housed in a metal package and the combination produces a reliable component.

This module is a duplex LC connector transceiver designed for use in Gigabit Ethernet applications and to provide IEEE-802.3z compliant link for 1.25 Gbps intermediate reach applications.

The 065-77SM transceivers use a intermediate wavelength (1,310 nm) FP laser diode to enable data transmissions of up to 10km on a single mode optical fiber.



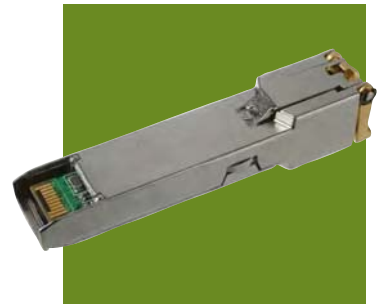
Model 065-77SM



Model 065-77FESM



Model 065-77AMM



Model 065-77RJ

SFP Fiber Modules

PART NO.	DESCRIPTION
065-77MM	SFP Fiber Module, Connector LC Multi Mode
065-77SM	SFP Fiber Module, Connector LC Single Mode
065-77AMM	SFP Fiber Module, Connector LC Multi Mode, Signamax Compatible
065-77ASM	SFP Fiber Module, Connector LC Single Mode, Signamax Compatible
065-77MAN	SFP Transceiver, RoHS Compliant 1.25 Gbps Managed, 1,310 nm, FP Laser
065-77RJ	SFP Transceiver, RoHS Compliant 1.25 Gbps 1000Base-T, RJ-45 Connector
065-77FEMM	SFP Transceiver, RoHS Compliant 100 Mbps Multi Mode, 1,310 nm, LED
065-77FESM	SFP Transceiver, RoHS Compliant 100 Mbps Single Mode, 1,310 nm, FP Laser
065-77WDMA	SFP Fiber Module Connector LC Single Mode WDM, Rx = 1,550, Tx = 1,310
065-77WDMB	SFP Fiber Module Connector LC Single Mode WDM, Tx = 1,550, Rx = 1,310
065-77CWDM1470	SFP Fiber Module LC Singlemode CWDM, 1.25 Gbps, 3.3V, 1,470 nm, 10 km
065-77CWDM1490	SFP Fiber Module LC Singlemode CWDM, 1.25 Gbps, 3.3V, 1,490 nm, 10 km
065-77CWDM1510	SFP Fiber Module LC Singlemode CWDM, 1.25 Gbps, 3.3V, 1,510 nm, 10 km
065-77CWDM1530	SFP Fiber Module LC Singlemode CWDM, 1.25 Gbps, 3.3V, 1,530 nm, 10 km
065-77CWDM1550	SFP Fiber Module LC Singlemode CWDM, 1.25 Gbps, 3.3V, 1,550 nm, 10 km
065-77CWDM1570	SFP Fiber Module LC Singlemode CWDM, 1.25 Gbps, 3.3V, 1,570 nm, 10 km
065-77CWDM1590	SFP Fiber Module LC Singlemode CWDM, 1.25 Gbps, 3.3V, 1,590 nm, 10 km
065-77CWDM1610	SFP Fiber Module LC Singlemode CWDM, 1.25 Gbps, 3.3V, 1,610 nm, 10 km