

ORiNOCO 11a/b/g Wireless Client Card Quick Installation Guide for Microsoft Vista

Pre-Installation Checklist

- PC running Windows Vista.
- PC needs to have proper PCI slot.

Installation and Initial Configuration

1. Verify package contents before you install

Each ORiNOCO shipment includes:

- One ORiNOCO 11a/b/g PCI card
- One ORiNOCO Installation CD-ROM containing the software and documentation.

2. Insert CD_ROM: Initial Configuration

- The Install Program for the ORiNOCO 11a/b/g PCI Card screen appears.
- Run **Setup.exe** from the CD if the installer does not launch automatically.

3. Click Next to begin on the Welcome dialog box



Figure 1: Setup “Welcome” dialog Box

4. Read and accept the license agreement

The license agreement screen appears now. By default, the text “I do not accept the terms in the license agreement” is selected.



Figure 2: License agreement

5. Select a destination folder and a program folder

- This is the location where the program files will be installed.
- If you wish to install the program files in a different folder, click **Change** and select the appropriate folder.
- Click **Next** to continue.

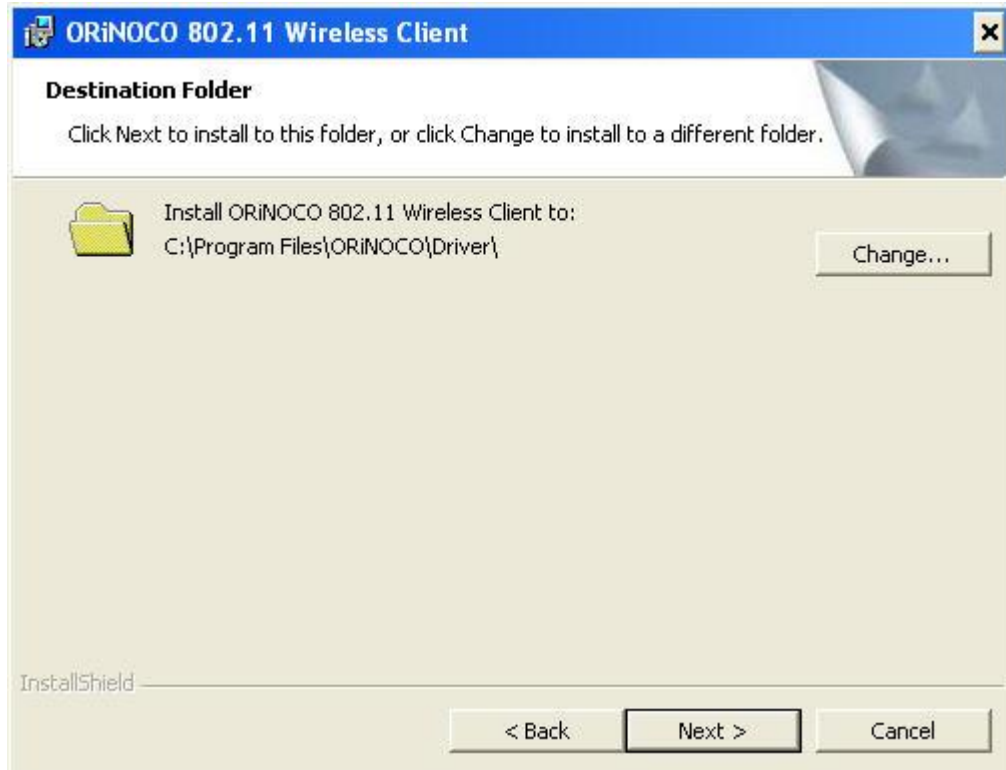


Figure 3: Choose Destination Folder for the Installation Program

6. Click Install to begin the installation process

- The installation begins. Shows the process in progress in the status bar.

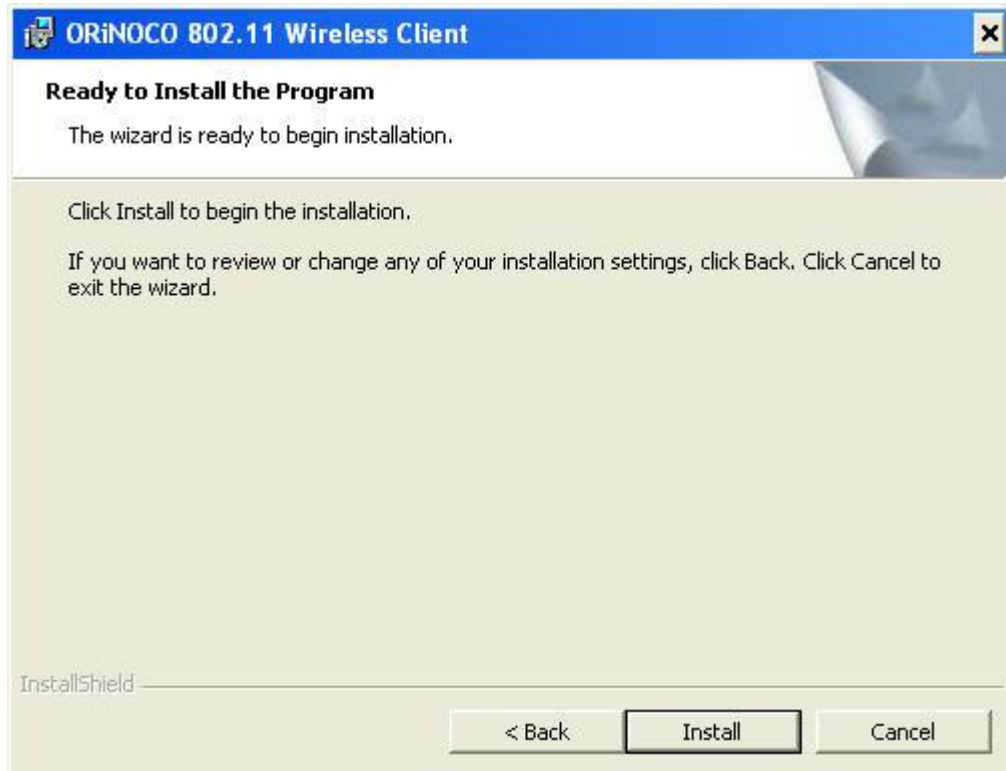


Figure 4: Install Setup dialog box

If you want to review or change any of your installation settings, click **Back**. Click **Cancel** to exit the wizard.

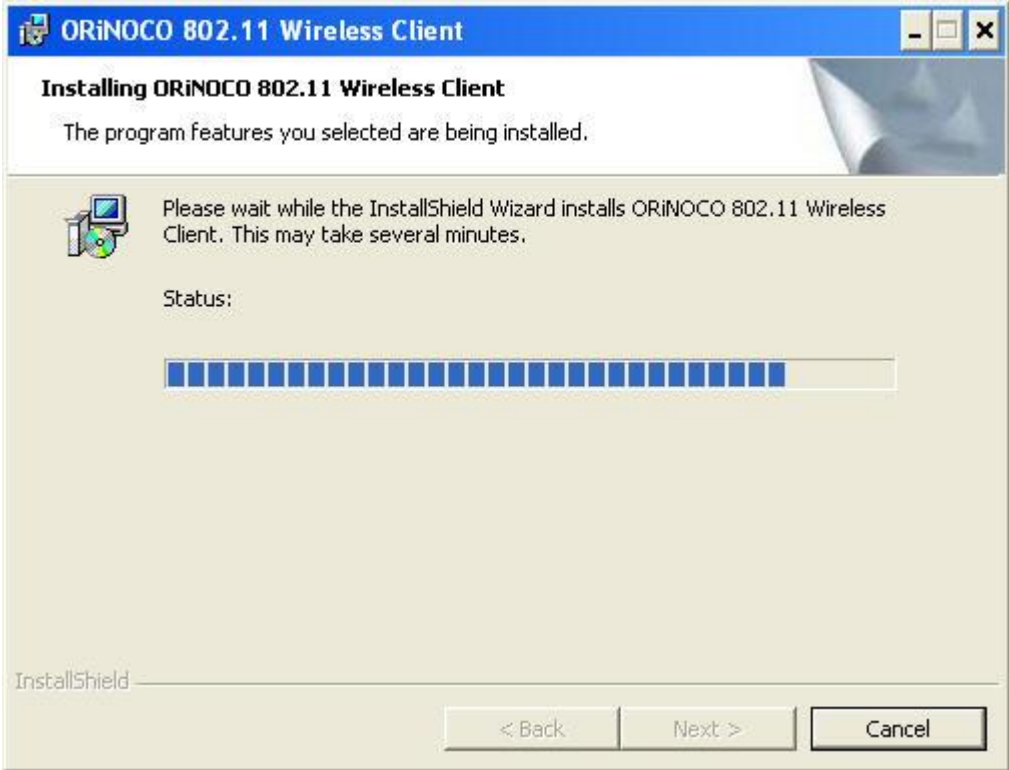


Figure 5: Installation process in progress

7. Click Finish when the installation is complete

- The Install Program has finished installing the ORiNOCO 11a/b/g PCI Card software on your computer.

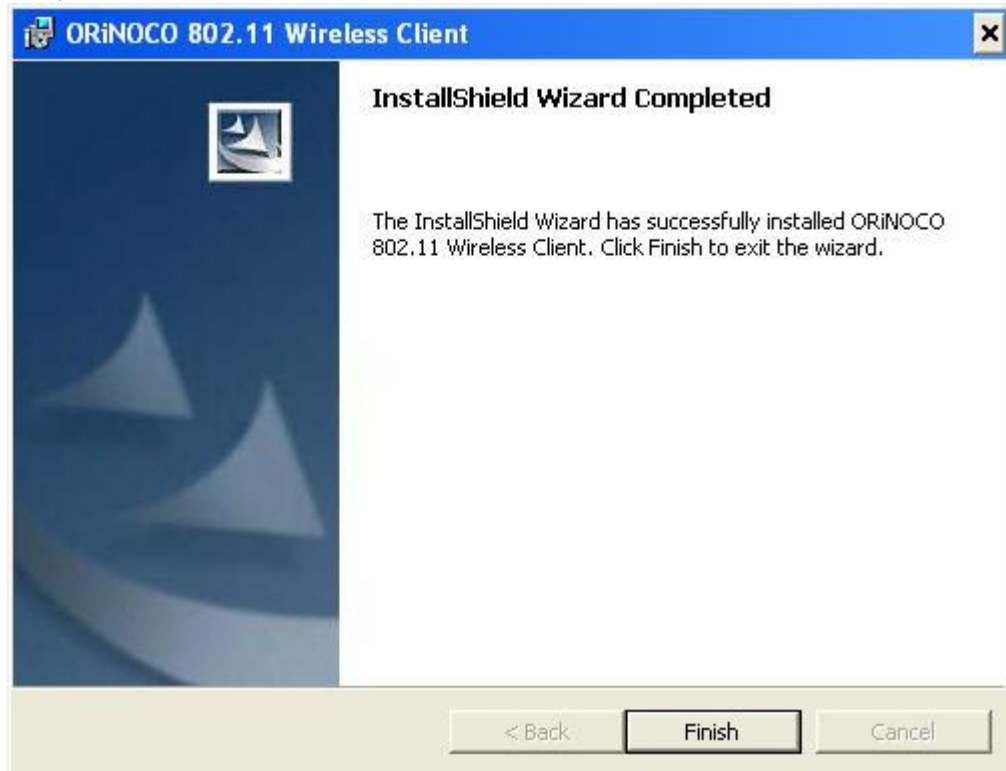


Figure 6: Installation completed

8. Shut down your computer

- Turn off your computer and unplug the power cable from the power outlet.

9. Remove the computer cover

- Refer to the instructions provided by the computer's manufacturer for details.
- Touch the metal chassis of computer to avoid damage caused by electrostatic discharge.

10. Complete the installation

- Select a PCI bus slot and remove the metal filler strip
- Insert the external antenna and cable through the PCI slot and out the back of the computer.
- Insert the PCI Card into the slot and secure it in place.
- Follow any on-screen instructions for complete installation.

Note: For wireless network connectivity configuration, refer to microsoft.com