

ORiNOCO 11a/b/g Wireless Client Card Quick Installation Guide for Microsoft Vista

Pre-Installation Checklist

- Laptop running Windows Vista.
- Laptop needs to have proper PCMCIA slot.

Installation and Initial Configuration

1. Verify package contents before you install

Each ORiNOCO shipment includes:

- One ORiNOCO 802.11a/b/g ComboCard (Gold or Silver)
- One ORiNOCO Installation CD-ROM containing software and documentation

2. Insert CD_ROM: Initial Configuration

- The Install Program for the ORiNOCO 11a/b/g PCMCIA Card screen appears.
- Run **Setup.exe** from the CD if the installer does not launch automatically.
- Do not insert the card into your laptop until Step 7 is complete.

3. Click Next to begin on the Welcome dialog box

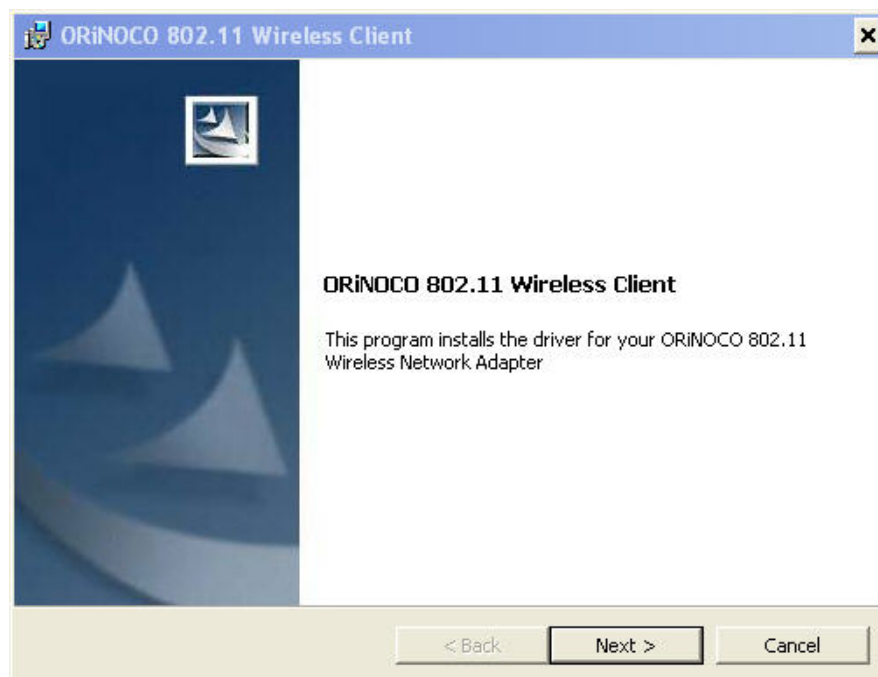


Figure 1: Setup "Welcome" dialog Box

4. Read and accept the license agreement

The license agreement screen appears now. By default, the text "I do not accept the terms in the license agreement" is selected.

- Select "I accept the terms in the license agreement" option in the screen.



Figure 2: License agreement

5. Select a destination folder and a program folder

- This is the location where the program files will be installed.
- If you wish to install the program files in a different folder, click **Change** and select the appropriate folder.
- Click **Next** to continue.

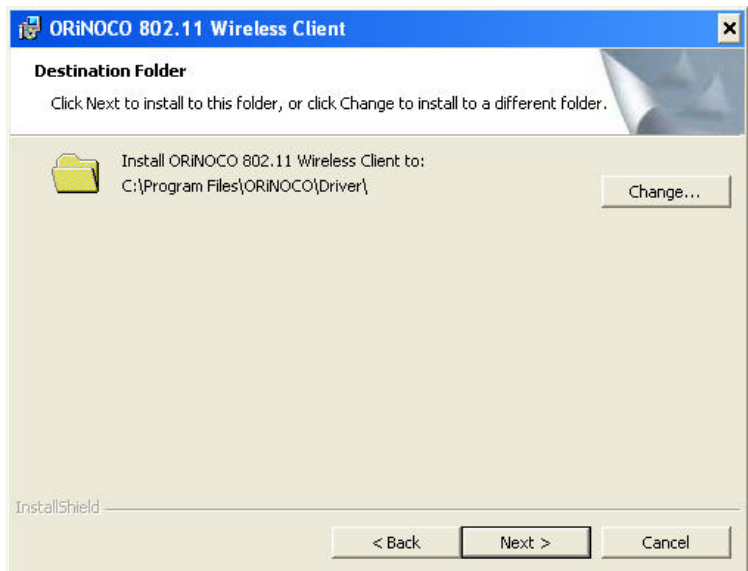


Figure 3: Choose Destination Folder for the Installation Program

6. Click Install to begin the installation process

The installation begins. The status bar displays the installation progress.

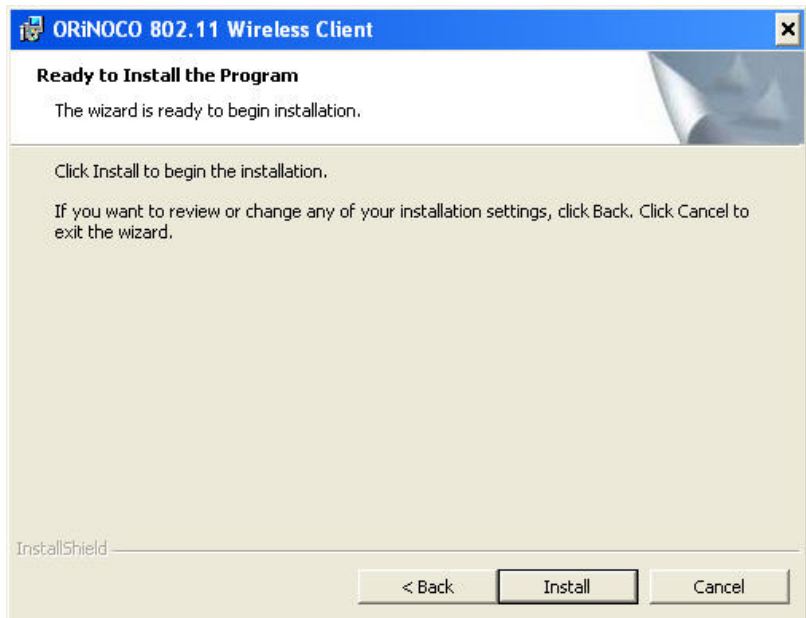


Figure 4: Install Setup dialog box

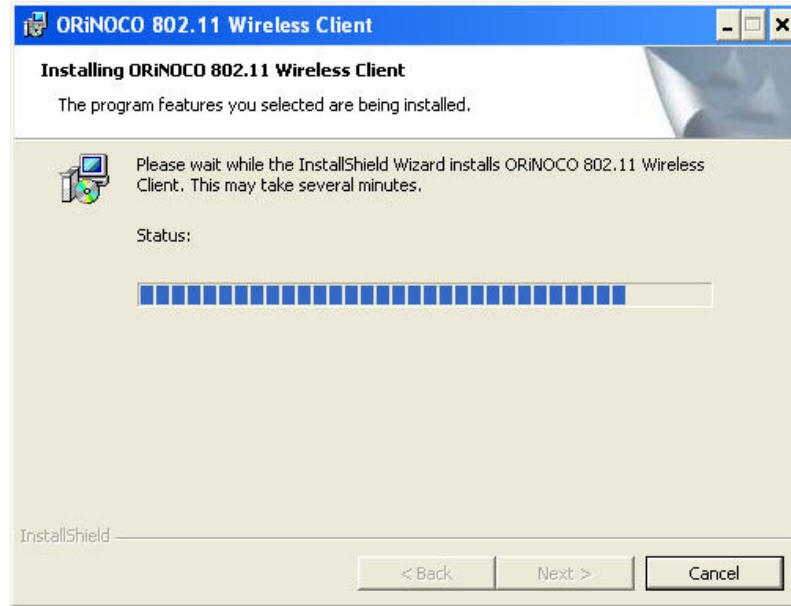


Figure 5: Installation process in progress

7. Click Finish when the installation is complete

The InstallShield Wizard has finished installing the ORiNOCO 802.11a/b/g ComboCard (Gold or Silver) software on your Laptop.

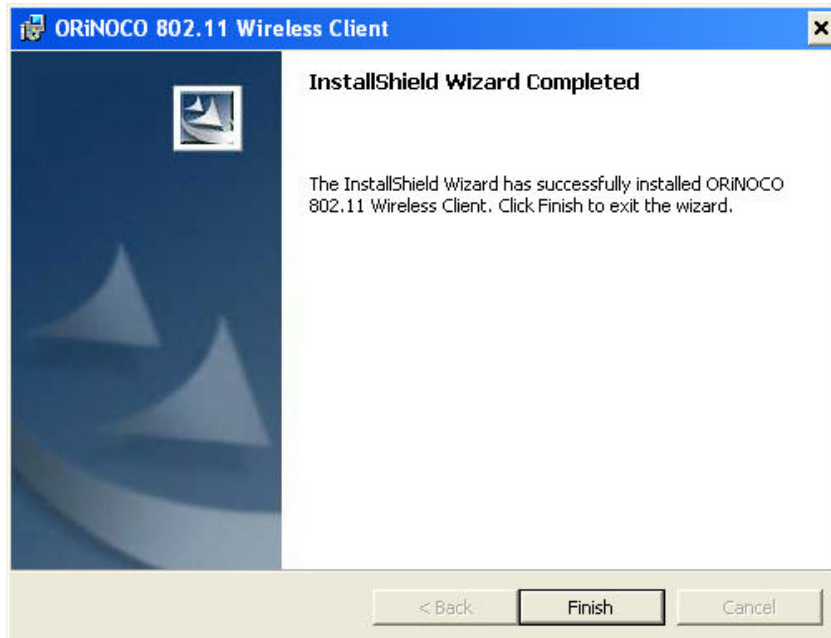


Figure 6: Installation completed

8. Insert the ComboCard into the Laptop

If prompted, follow any on-screen instructions to complete the installation.

NOTE: For wireless network connectivity configuration, refer to www.microsoft.com.