

19" Shelves

Signamax shelves for keyboard, documentation and LCD monitor are designed for the installation into the 19" data rack profiles. Shelves with lockable drawers for safe storage of service documentation and shelves with an integrated computer keyboard and monitor occupy the space of 1U. This gives you more room in the data rack.



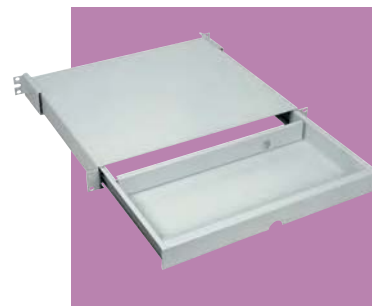
Documentation shelf opened



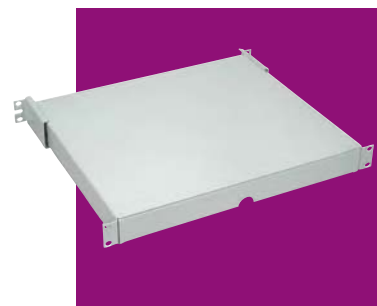
Keyboard and documentation shelves

PART NO.	DESCRIPTION
REC-SV-DOC	1U documentation shelf with lock
REC-SV-KB	Keyboard shelf 1U
REC-SV-KBM	Shelf for keyboard and LCD monitor, 1U

Colour grey (RAL 7035). Black (RAL 9005) available on request.



Keyboard shelf opened

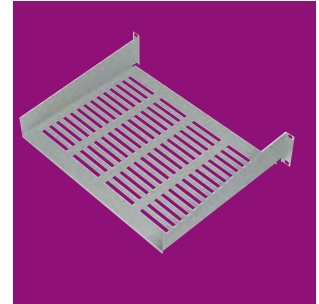
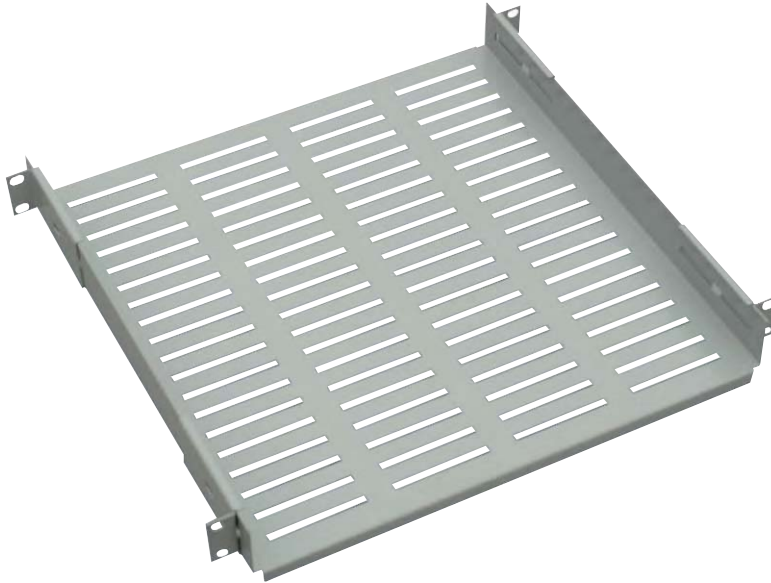


Keyboard shelf closed

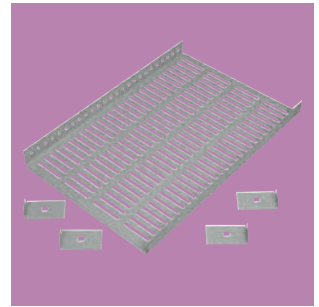
19" Shelves

Signamax 19" shelves are convenient for equipment not designed for 19" installations. Our product range includes shelves for fixed and drawer-style installations. Drawer-style system enables easier access to the equipment being used. Ventilated bottom assures cooling airflow to the equipment. Shelf supports and mounting brackets are included.

Fixed shelves are available in depths from 150 mm to 550 mm.
Sliding shelves are available in depths from 250 mm to 450 mm.



REC-SV15B

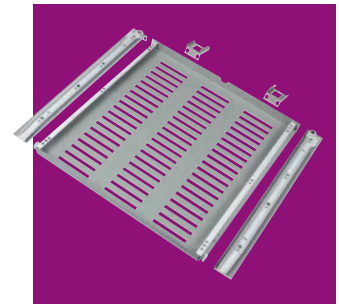


REC-SV35B

19" Shelves

PART NO.	DESCRIPTION
REC-SV15B	Shelf, 150 mm depth, 1U
REC-SV25B	Shelf, 250 mm depth, 1U
REC-SV35B	Shelf, 350 mm depth, 1U
REC-SV45B	Shelf, 450 mm depth, 1U
REC-SV55B	Shelf, 550 mm depth, 1U
REC-SV65B	Shelf, 650 mm depth, 1U
REC-TSV25B	Drawer-style Shelf, 250 mm depth, 1U
REC-TSV35B	Drawer-style Shelf, 350 mm depth, 1U
REC-TSV45B	Drawer-style Shelf, 450 mm depth, 1U

Colour grey (RAL 7035). Black (RAL 9005) available on request.



REC-TSV45B