

Wireless @DSL2+ Router

Quick Installation Guide



**Wireless
ADSL2+ Router**

System Requirements

1. Pentium 200MHZ processor or above
2. Windows 98SE, Windows Me, Windows 2000, Windows XP and Windows Vista.
3. 64MB of RAM or above.
4. 25MB free disk space

Package Contents

For Annex-B WLAN ADSL2+ Router

1. WLAN ADSL2+ Router
2. CD-ROM (Software & Manual)
3. Quick Installation Guide
4. 1 x Telephone Cable (RJ-11)
5. Ethernet Cable (RJ-45)
6. AC Adaptor
7. Annex-B ATF057 Splitter (Optional, with an extra RJ-11 Telephone cable)

For Annex-A WLAN ADSL2+ Router

1. WLAN ADSL2+ Router
2. CD-ROM (Software & Manual)
3. Quick Installation Guide
4. 1 x Telephone Cable (RJ-11)
5. Ethernet Cable (RJ-45)
6. AC Adaptor
8. Annex-A ATF085A1R Splitter (Optional, with an extra RJ-11 Telephone cable)

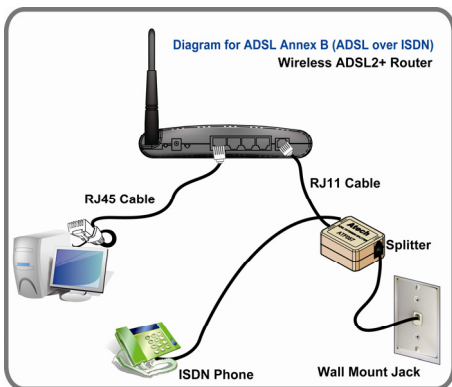
Installation & Setup

Follow each STEP carefully and only go to the next step once you have complete the previous STEP.

STEP 1

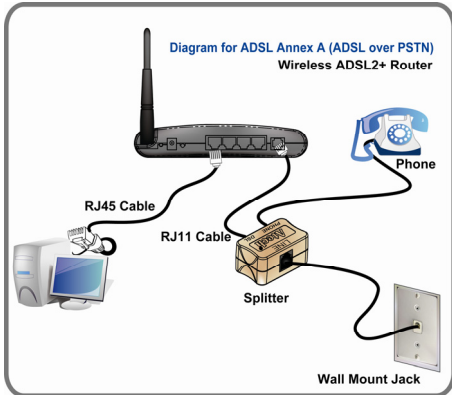
Connection of WLAN ADSL2+ Router

If you have an **ISDN telephone line** connect the modem router as shown below:



1. Connect the supplied RJ45 Ethernet cable from your PC's Ethernet port to any of the 4 WLAN ADSL2+ Router's LAN Ports.
2. Connect the supplied RJ11 telephone cable from your home's telephone jack to the "LINE" port of the supplied splitter. Connect another RJ11 telephone cable to the "MODEM" port of the splitter and connect the other end of this cable to the LINE port of your WLAN ADSL2+ Router.
3. Connect a RJ11 telephone cable to the "PHONE" port of the splitter and connect the other end to your telephone.
4. Connect the power adapter to the power inlet (PWR) of the WLAN ADSL2+ Router and turn the power switch (SW) of your WLAN ADSL2+ Router on.

If you have a **PSTN telephone line (normal analog line)** connect the router as shown below:



1. Connect the supplied RJ45 Ethernet cable from your PC's Ethernet port to any of the 4 WLAN ADSL2+ Router's LAN Ports.
2. Connect the supplied RJ11 telephone cable from your home's telephone jack to the "LINE" port of the supplied splitter. Connect the other supplied RJ11 telephone cable to the "DSL" port of the splitter and connect the other end of this cable to the "LINE" port of your WLAN ADSL2+ Router.
3. Connect a RJ11 telephone cable to the "PHONE" port of the splitter and connect the other end to your telephone.
4. Connect the power adapter to the power inlet (PWR) of the WLAN ADSL2+ Router and turn the power switch (SW) of your WLAN ADSL2+ Router on.

LED Meaning

Your WLAN ADSL2+ Router has indicator lights on the front side. Please see below for an explanation of the function of each indicator light.

- **PWR** : Power indicator
- **@ACT** : ADSL Active indicator
- **@LINK** : ADSL Link indicator
- **10/100Mbps 1~4** : Ethernet active indicator
- **WLAN ACT** : Wireless active indicator

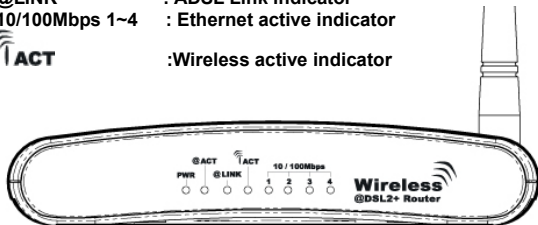


Table 1.1: LED function

Label	Color	On	Flash	Off
PWR	Blue	Ready	Not Ready	Power Off
@ACT	Blue	N/A	ADSL Active	ADSL IDLE
@LINK	Blue	Connect to DSLAM	Disconnect to DSLAM	N/A
10/100Mbps 1~4	Blue	Ethernet Connected	Transmit / Receive Data	Ethernet Disconnected
WLAN ACT	Blue	N/A	Wireless Active	N/A

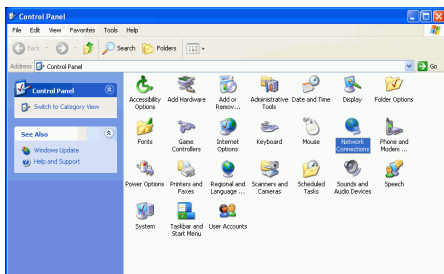
STEP 2

Configuration Procedures

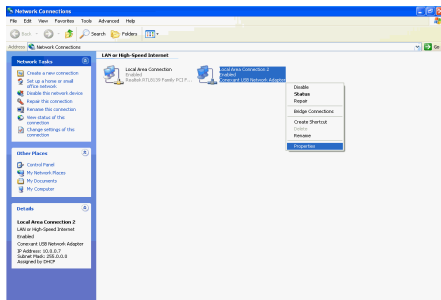
Before starting the WLAN ADSL2+ Router configuration, please kindly configure the PC computer as below, to have automatic IP address / DNS Server.

For Windows 98SE/ME/2000/XP

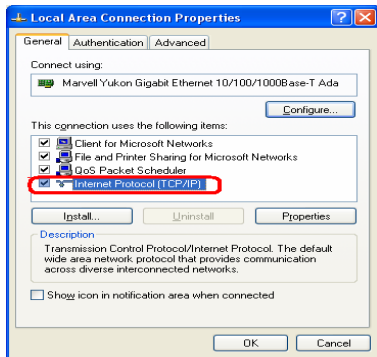
1. Click on **"Start"** -> **"Control Panel"** (in Classic View). In the Control Panel, double click on **"Network Connections"** to continue.



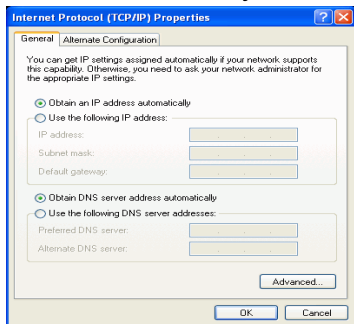
2. Single RIGHT click on **"Local Area connection"**, then click **"Properties"**.



3. Double click on "Internet Protocol (TCP/IP)".



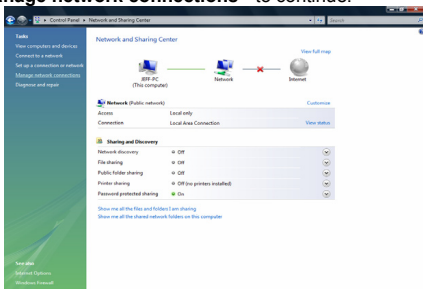
4. Check "Obtain an IP address automatically" and "Obtain DNS server address automatically" then click on "OK" to continue.



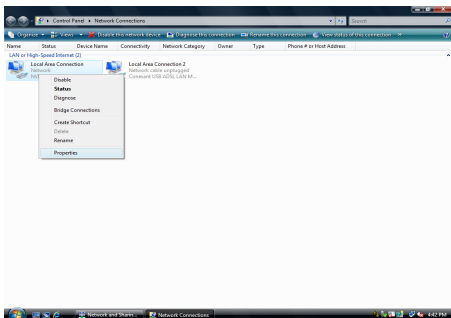
5. Click "Show icon in notification area when connected" (see screen image in 3. above) then Click on "OK" to complete the setup procedures.

For Windows Vista-32/64

1. Click on **"Start"** -> **"Control Panel"** (in Classic View) -> **"Network and Sharing Center"**. In the Manage network connections, double click on **"Manage network connections"** to continue.

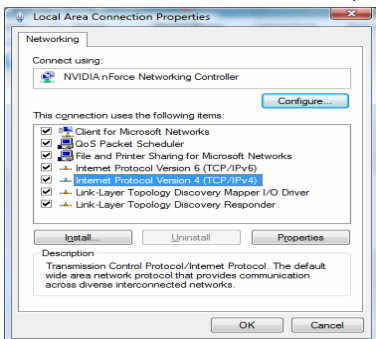


2. Single right click on **"Local Area connection"**, then click **"Properties"**.

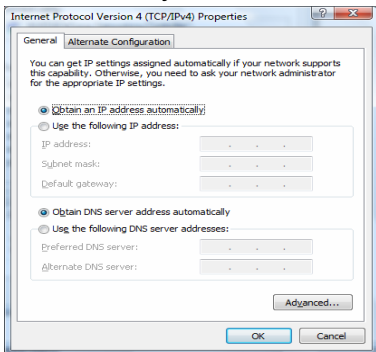


3. The screen will display the information **"User Account Control"** and click **"Continue"** to continue.

4. Double click on "**Internet Protocol Version 4(TCP/IPv4)**"



5. Check "**Obtain an IP address automatically**" and "**Obtain DNS server address automatically**" then click on "**OK**" to continue.



6. Click "**Show icon in notification area when connected**" (see screen image in 4. above) then Click on "**OK**" to complete the setup procedures.

STEP 3

WLAN ADSL2+ Router Configuration

1. Please insert the supplied CD into your CD-ROM drive.
2. The CD should auto-start, displaying the window shown in 3. below. If your CD does not start automatically go to Windows Explorer, Select your CD drive and double click “**setup**”
3. Please click “**Ethernet connection**” button to continue.

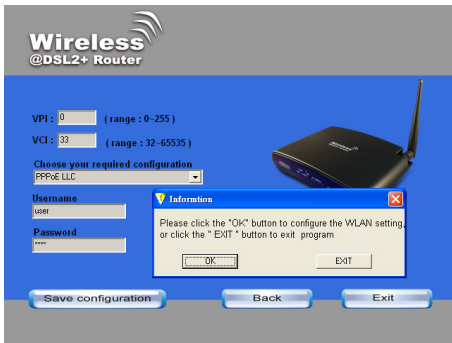


4. Enter the VPI, VCI, Username and Password your ISP (Internet Services Provider) provided, and choose your required configuration. Then press “**Save Configuration**”. Please wait for about 30 seconds.

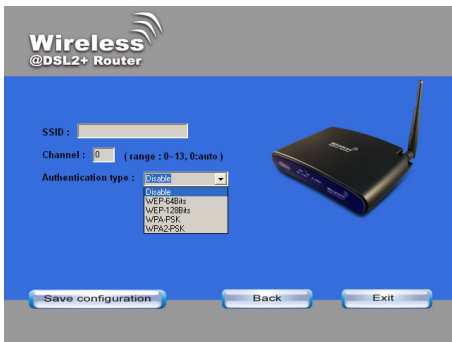


Wireless ADSL2+ Router

- When the “**information**” screen pop-up, please click “**OK**” button, to configure the WLAN setting, or click “**EXIT**” button to exit program.



- Please enter the SSID and wireless channel if you want to change (the default setting SSID=RT2561_6, Channel=6). Choose the Authentication type if necessary, as Disable / WEP-64bits / WEP-128bits / WPA-PSK and WPA2-PSK. For example, you choose the WEP 64bits type and save the authentication keys in key 1, displaying the screen shown in 7. below.



7. Please click on “**Save configuration**” button. When the procedure is completed, the program will exit.

Wireless
@DSL2+ Router

SSID :

Channel : (range : 0-13, 0:auto)

Authentication type :

Key 1 : (Please enter the 5 characters)

Preparing to save configuration ...
Complete.
Please restart your device...

Save configuration Back Exit

STEP 4

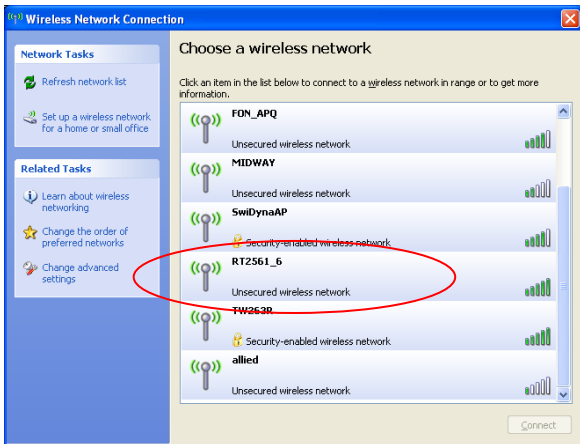
Connect Wirelessly

For easy installation it is saved to keep the settings. You can later change the wireless settings via the wireless configuration menu. (see user manual on the CD – Chapter 8 and other)

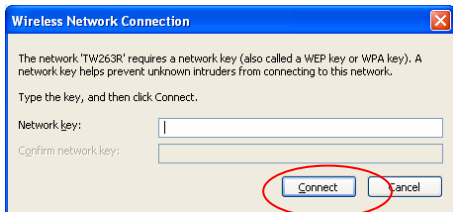
1. Double click on the wireless icon on your computer and search for the wireless network that you enter SSID name.



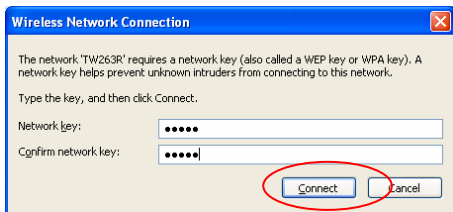
2. Click on the wireless network that you enter SSID name to connect



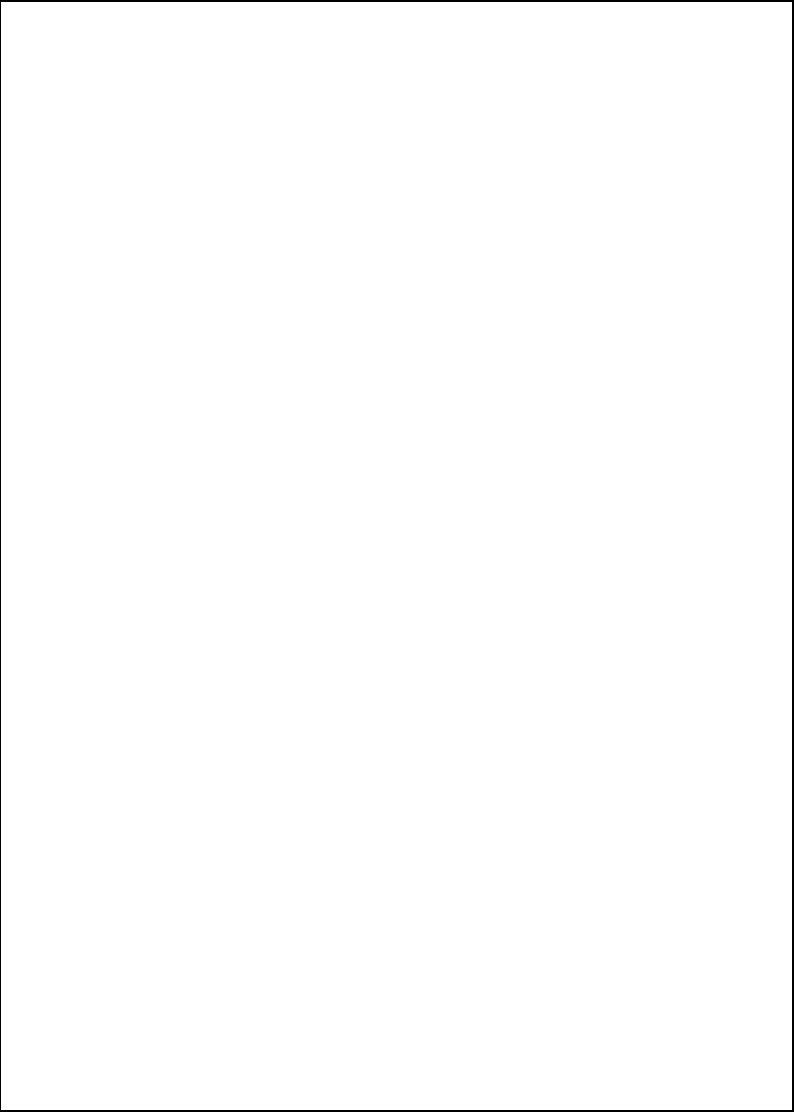
3. Enter the network key that belongs to your authentication type and key. You can later change this network key via the wireless configuration menu. (see user manual on the CD – Chapter 8 and other)



4. Click on “**Connect**” or “**Apply**”



Now, the WLAN ADSL2+ Router has been configured, and able to connect to ISP/ Website.



Wireless
@DSL2+ Router

