



Package Contents

- Handset
- 2 NiMH batteries
- Charger with Power Adapter
- USB Base Station with 5 foot USB Cable
- Quick Installation
- Setup Wizard CD with Skype Software
- Registration Information Card

1 Setting up the Telephony Kit

A Remove the Setup CD-ROM from the Telephony Kit's box and place it in your PC's CD-ROM drive. The Setup Wizard should run automatically, and the *Welcome* screen should appear.

B From the *Welcome* screen, select the language in which you want the Setup Wizard to appear from the pull-down menu. Then, click the **Next** button.

C From the next screen that appears, click the **Click Here to Start** button.



B



C

D Read the License Agreement by scrolling down the screen. Then, click **I Accept the agreement**. Click **Next** to continue the installation.



D

E As shown on the next screen, connect the USB Base Station to your PC's USB port. Then, click the **Next** button to continue.



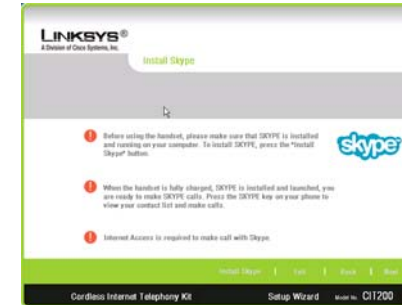
E

F As shown on the next screen, insert the batteries into the handset and place the handset on the charger. The phone should charge for at least 14 hours before use. Click the **Next** button to continue.



F

G Read the cautions on the following screen before clicking the **Next** button to continue and the Wizard will start copying files to your PC.



G

Before using the handset, you must have SKYPE installed and running on your PC.

After the handset is charged and SKYPE is installed on your PC, press the SKYPE button on your phone to view your contact list and make calls.

Internet access is required to utilize SKYPE.

Cordless Internet Telephony Kit

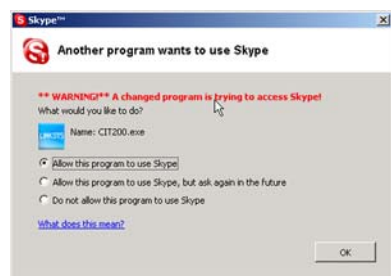
Quick Installation



After files are installed on your PC, the Setup Wizard will conclude. Click the **Online Registration** button to register this product or the **Exit** button to close the Setup Wizard



H



After you open the SKYPE application on your PC, the following screen will appear. Select **Allow this application to use SKYPE** and click OK.

Congratulations! The Cordless Internet Telephony Kit is installed!

Before you use the Cordless Internet Telephony Kit, please make sure you:

- A Have SKYPE installed and running on your PC.
- B Have connected the Telephony Kit properly
- C Have charged the handset.

BEFORE USING YOUR TELEPHONE EQUIPMENT, BASIC SAFETY PRECAUTIONS SHOULD ALWAYS BE FOLLOWED TO REDUCE THE RISK OF FIRE, ELECTRIC SHOCK AND INJURY, INCLUDING THE FOLLOWING.

- Read and follow all warnings and instructions marked on the product.
- Do not use this product near water, laundry tub, in a wet basement, or near a swimming pool.
- Do not place this product on an unstable table. The product may fall and be damaged.
- This product should never be placed near or over a radiator or heat register.
- This product should be operated only from the type of power source indicated on the label.
- Do not allow anything to rest on the power cord. Do not locate this product where the cord will be abused by persons walking on it.
- Do not overload wall outlets and extension cords as this can result in the risk of fire or electric shock.
- Avoid using a telephone during an electrical storm. There may be a remote risk of electric shock from lightning.
- Do not use this product to report a gas leak in the vicinity of the leak.
- Do not use this product near intensive care medical equipment or by persons with pacemakers.
- Due to the radio signals between base station and handset, wearers of hearing aids may experience interference in the form of a humming noise.

BATTERIES

- Use only the battery type listed in the instruction manual. Do not use lithium batteries or non-rechargeable batteries that may damage the handset and charger.

- Do not dispose of the battery in a fire, as they can explode.
- Do not open or mutilate the battery. Released electrolyte is corrosive and can cause damage to the eyes or skin. It can be toxic if swallowed.
- Avoid contact with metal objects when handling the battery. These objects could short out the batteries or cause the conductor to overheat resulting in burns.
- Do not attempt to recharge the battery cell by heating it. Sudden release of battery electrolyte can cause burns or irritation to the eyes or skin.
- Observe the proper polarity, or direction, of any battery. Reverse insertion of the battery cell can result in leakage or explosion.
- Remove the battery cells if you do not plan to use the product for several months at a time.
- Discard any "dead" batteries because they are likely to leak into the product.
- Do not store this product or the battery in a high temperature area. Battery stored in a freezer or refrigerator should be protected from condensation during storage and defrosting. Battery should be stabilized at room temperature before using.
- Your battery is rechargeable and can be recycled once it outlives its usefulness. Depending upon your local and state law, it might be illegal to dispose of this battery into a municipal waste system. Check with your local solid waste company for more information on your recycling options for the battery cells.

SAVE THESE INSTRUCTIONS

LINKSYS®
A Division of Cisco Systems, Inc.

For additional information or troubleshooting help, refer to the User Guide on the Setup CD-ROM. You can also call or email for further support.

24-hour Technical Support
800-326-7114
(toll-free from US or Canada)

E-mail Support
support@linksys.com

Website
<http://www.linksys.com> or
<http://support.linksys.com>

RMA (Return Merchandise Authorization)
<http://www.linksys.com/support>

FTP Site
<ftp://ftp.linksys.com>

Sales Information
800-546-5797 (800-LINKSYS)

Linksys is a registered trademark or trademark of Cisco Systems, Inc. and/or its affiliates in the U.S. and certain other countries. Copyright © 2005 Cisco Systems, Inc. All rights reserved.