

NetEnforcer® AC-1000 Series

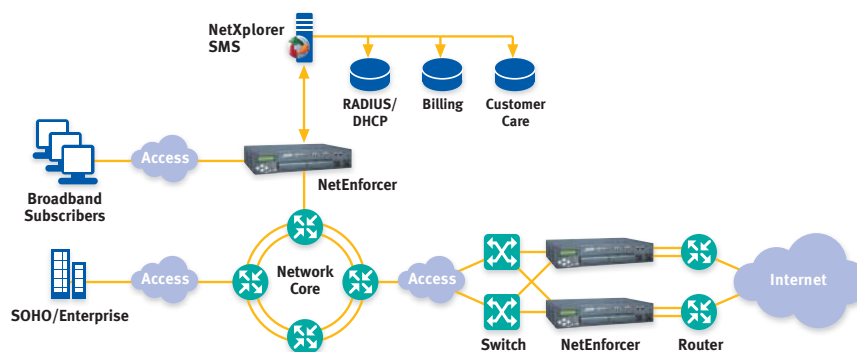
Carrier Class Traffic Management Devices



The NetEnforcer® AC-1000 series of carrier class traffic management devices is especially suitable for medium and large broadband service provider networks. Using deep packet inspection (DPI) technology with QoS enforcement capabilities, they monitor and control network traffic and subscriber behavior, and provide an unsurpassed level of visibility.

Main Features

- 2, 4 or 8 ports support various network topologies
- Range of operation speeds - 155, 310, 400, 622 Mbps and 1 Gbps (full duplex)
- Accurate identification of hundreds of applications and protocols out-of-the-box
- Advanced signatures and behavioral recognition technologies for individual control of different Internet applications, such as P2P, VoIP, streaming and gaming
- Supported by NetXplorer centralized management system for streamlined global visibility and control, insightful reporting and analysis, and frontline security
- Accurate per subscriber and per application control
- Dynamic provisioning of subscribers and services
- Redirection of subscribers to captive portal
- Easy upgrading to higher speeds and increases in number of policies using the same platform
- Continuous, easy-to-use traffic monitoring for fast troubleshooting, usage tracking and capacity planning
- Proactive, automatically-triggered early-warning mechanisms providing administrators with alarms concerning network events and the ability to automate corrective actions
- Detection of traffic anomalies and mitigation of network attacks and security threats by immediate isolation of malicious traffic, without interrupting regular traffic
- Fail-safe performance with external hardware bypass and full redundancy support



Specifications

The NetEnforcer AC-1000 series is available in three models serving a range of network configurations and needs.

	AC-1010	AC-1020	AC-1040
Capacity			
Number of Connections/Flows	1,000,000 / 2,000,000		
Throughput	2 Gbps (1 Gbps, Full Duplex)		
Pipes/Virtual Channels	10,000 / 80,000	10,000 / 80,000	4,000 / 28,000
No. of Subscribers	100,000		
Interfaces and Connections			
Management Interface	10/100 BaseT		
Network Interfaces (Internal / External)	2x1000 BaseT or 2x1000 BaseSX or 2x1000 BaseLX	4x1000 BaseT or 4x1000 BaseSX or 4x1000 BaseLX	8x10/100 BaseT
Console Port	Serial, RJ-45 Connector		
Deep Packet Inspection (DPI) (Typical Examples)			
P2P Protocols	Including BitTorrent, eDonkey, Warez, WinMX, Kazaa		
VoIP Protocols	Including Skype, H.323, SIP, RTP, Net2Phone		
Gaming Protocols	Including Doom, Diablo, MSN Game, SWAT, Ultima		
Web/Streaming Application Protocols	Including Abacast, iTunes, RTSP, Winamp MMS		
Traffic Encapsulation Protocols	Including L2TP, MPLS, PPPoE		
Product Options			
Monitoring Only	Yes	Yes	Yes
QoS Enforcement Levels	155, 310, 622 Mbps and 1 Gbps (Full Duplex)		400 Mbps (Full Duplex)
Policy Levels (Pipes/VCs)	2,000 / 8,000; 5,000 / 40,000; 10,000 / 80,000		4,000 / 28,000
Redundancy	Serial & parallel (1:1)	Serial, parallel & active (1:1, 1+1)	
Add-Ons: NetXplorer Enabler	Yes	Yes	Yes
NetXplorer Reporter	Yes	Yes	Yes
NetAccountant	Yes	Yes	Yes
NetRedirector	Yes	Yes	Yes
Dimensions			
Size (H x W x D)	Standard 2U by 19" rack mount		
Weight	8.3 kg (18.2 lb)		
Bypass Unit	External, 1U, 19" rack mount		
Power			
Input (AC/DC)	100 to 240 VAC, 80 W; -48 VDC, 80 W		
No. Power Supply Units	2 (Load Sharing)		
Redundancy for PSUs	1 + 1		
Safety and Certifications			
Safety	UL 60950-1 / CSA CS22.2 60950 (ITE) EN 60950-1 ITE		
Emission	EN 55024:1994; A1:2001; A2:2003 Immunity for ITE EN 61000-3-2:2001 Harmonic Emissions EN 61000-3-3:1995; A1:2000 Voltage Fluctuations EN 55022:1998; A1:2000; A2:2003 Emissions for ITE VCCI FCC Part 15, Sub-Part B		

About Allot Communications

Allot Communications is all about broadband traffic management solutions for intelligent networks. Designed for carriers, service providers and enterprises, Allot solutions apply deep packet inspection (DPI) technology to transform broadband pipes into smart networks. This creates the visibility and control vital to manage applications and services, guarantee quality of service (QoS), contain operating costs and maximize revenue. Allot believes in listening to customers, and provides them access to its global network of visionaries, innovators and support engineers.

www.allot.com info@allot.com

- **Americas:** 7664 Golden Triangle Drive, Eden Prairie, MN 55344 USA · Tel: (952) 944-3100 · Toll free: (877) 255-6826 · Fax: (952) 944-3555
- **Europe:** NCI – Les Centres d’Affaires Village d’Entreprises ‘Green Side’ Batiment 7, 400 Avenue Roumanille, BP309, 06906 Sophia Antipolis Cedex, France · Tel: 33 (0) 4-93-001167 · Fax: 33 (0) 4-93-001165
- **Asia Pacific:** 6, Ubi Road 1, Wintech Centre 6-12, Singapore 408726 · Tel: 65 6841-3020 Fax: 65 6747-9173
- **Japan:** Yajima Building, 8F, 7-11-3 Ginza, Chuo-ku, Tokyo 104-0061 · Tel: 81(3) 5537-7114 · Fax: 81(3) 5527-5281 · www.allot.jp
- **Israel:** 5 Hanagar Street, Industrial Zone B, Hod-Hasharon, 45800, Israel · Tel: 972 (9) 7619200 · Fax: 972 (9) 744-3626

